

Magnetic Door Catch

INSTALLATION INSTRUCTIONS

Centor Europe
+44 (0)121 701 2500
mail@centor.eu
www.centor.eu

Centor North America
toll free 866-255-0008
mail@centorarchitectural.com
www.centorarchitectural.com

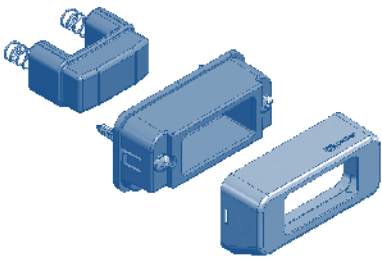
Centor Asia Pacific
1300 CENTOR
mail@centor.com.au
www.centor.com.au



centor ARCHITECTURAL

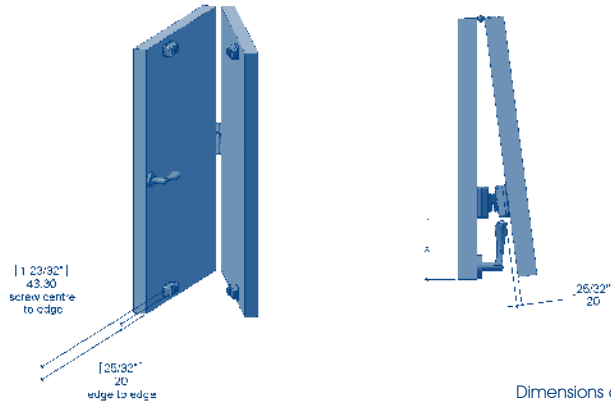
1. ASSEMBLE

Assemble the door catch in the order shown.
Ensure the springs remain in place.



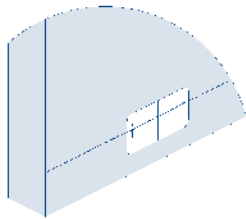
2. LOCATION

The location of door catch is recommended as shown.
Ensure there is enough clearance for door furniture.



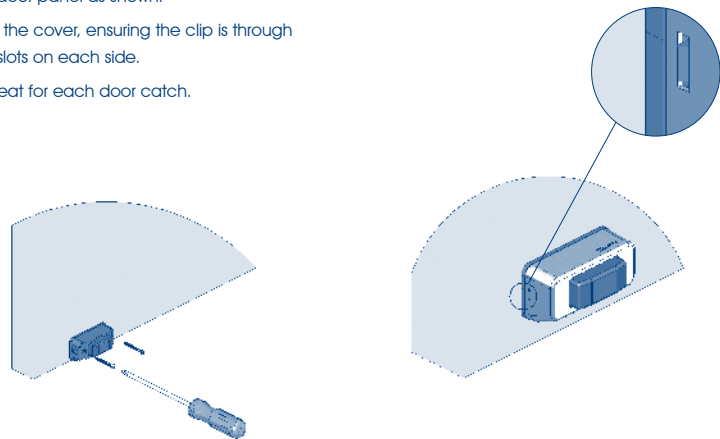
3. POSITIONING TEMPLATE

Mark the door panel with the desired location of the door catch. Line up the template (see TEMPLATE below) and mark the screw holes.



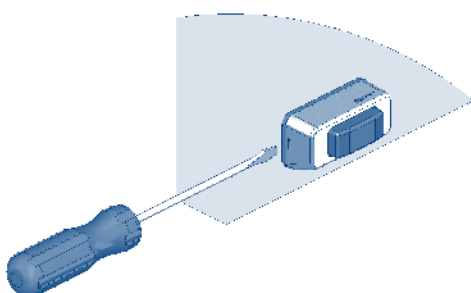
4. ATTACH TO DOOR

- After pre-drilling the screw hole, fix the set onto the door panel as shown.
- Add the cover, ensuring the clip is through the slots on each side.
- Repeat for each door catch.



5. REMOVAL

Push the clips in on both sides and remove the cover from the base. Unscrew the screws to remove the door catch from the door panel.



TEMPLATE

Cut out template below to accurately position door catch on door panel.

